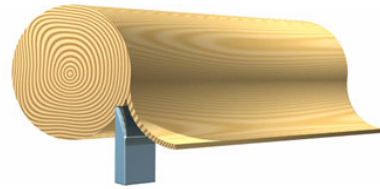
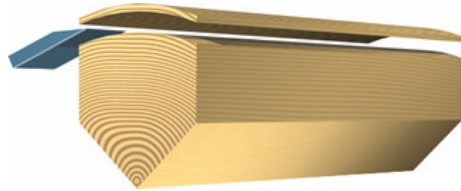


## *Rotary Cut*



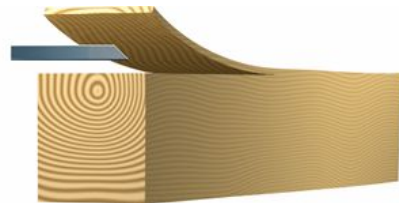
The log is centered on a lathe and turned against a broad cutting knife set into the log at a slight angle

## *Half-Round Slicing*



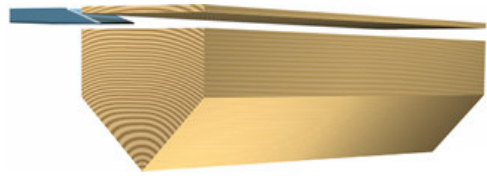
Sliced on an arc parallel to the center of the log, this cut achieves a flat-cut veneer appearance.

## *Flat Sawn*



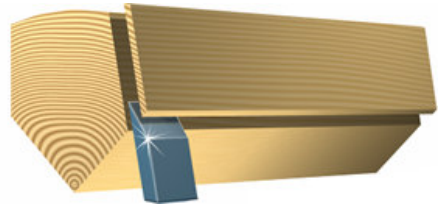
This is done from a board of flat sawn lumber rather than from a log. A variegated figure is created with this slice.

## *Plain Slicing*



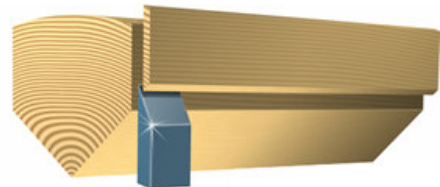
By slicing parallel to the center of the log, a raised “cathedral effect” is formed by the innermost rings.

## *Rift Cut*



This straight grain cut is derived by slicing red and white oak at a slight angle to minimize the irregularities in the wood.

## *Quarter Slicing*



The slicing is made perpendicular to the annual growth rings of the tree. This creates a straight grain appearance.